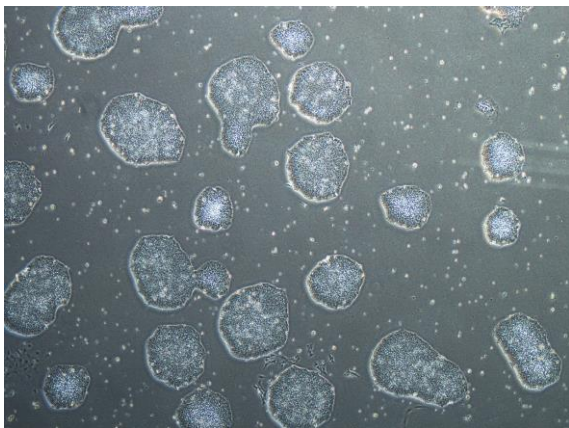
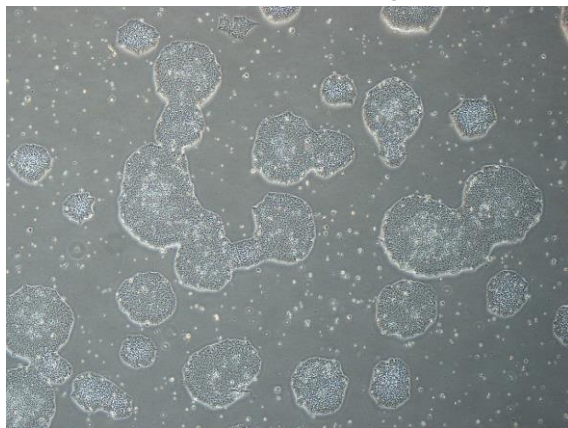


【 CiRA-j-1143 】 Morphology of iPSC colonies

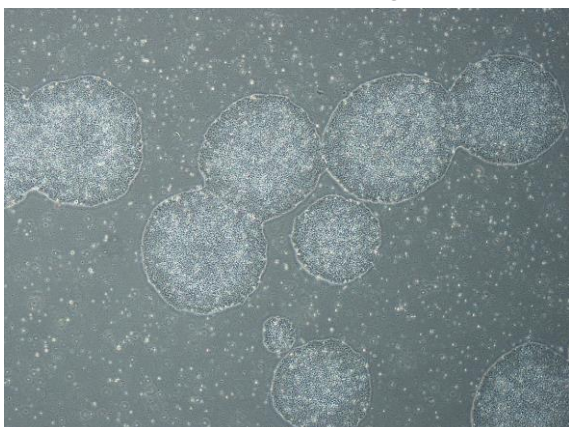
CiRA-j-1143-A: passage-3



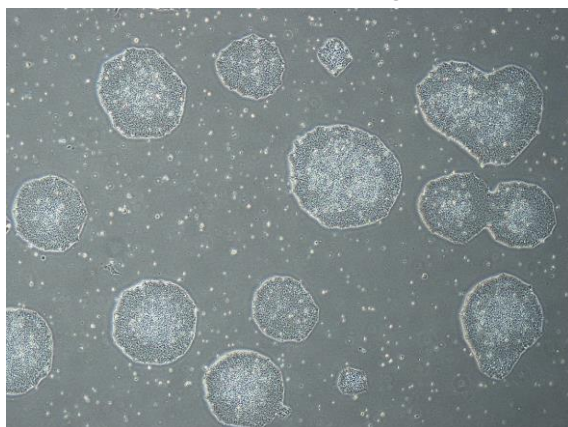
CiRA-j-1143-B: passage-3



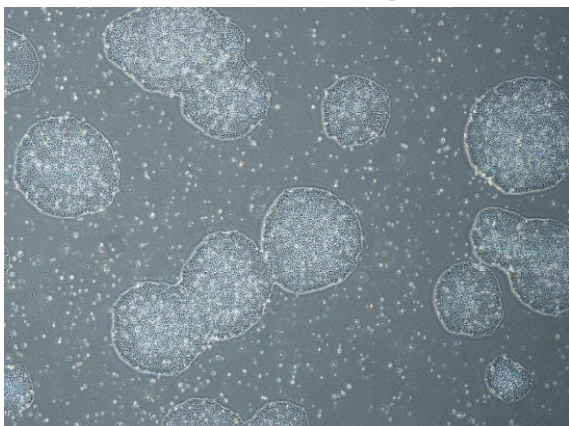
CiRA-j-1143-C: passage-3



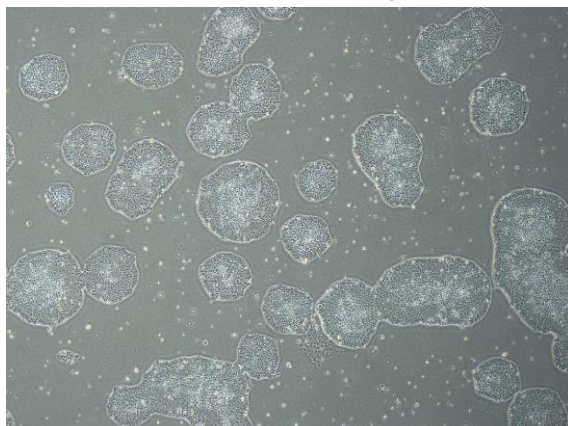
CiRA-j-1143-D: passage-3



CiRA-j-1143-E: passage-3



CiRA-j-1143-F: passage-3



(All images were captured at 4x magnification)